

# Quality - Control - Software ES15 Win

Quality - control - program to operate the color measurement system ER50 in the laboratory.

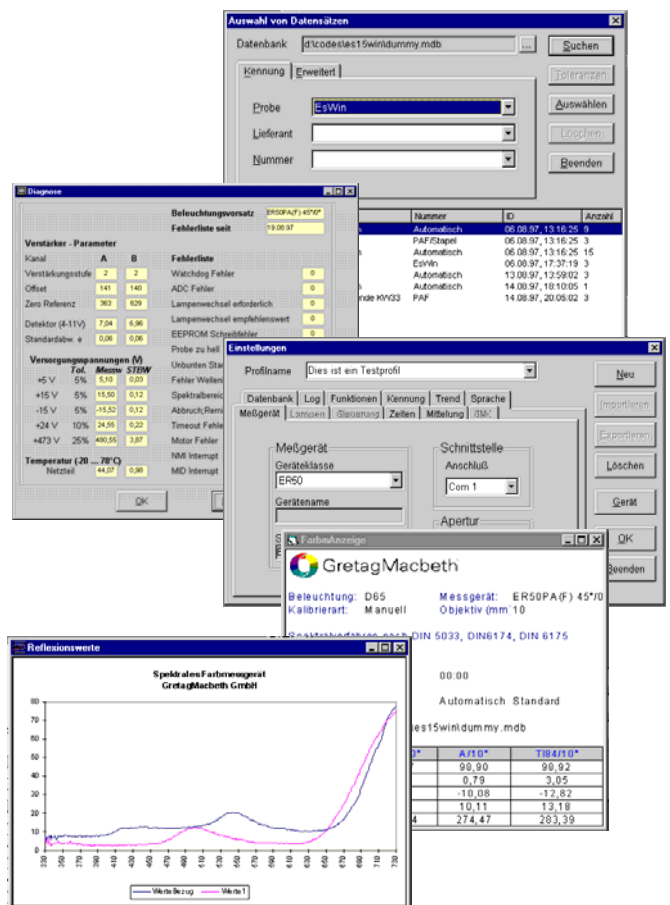
For PC with Windows - operating system

## Advantages of color measurement in the laboratory

- ✓ Standardized and objective color comparison of samples
- ✓ Setting of objective tolerance limits
- ✓ Storing of measurement results
- ✓ Documentation of production (ISO 9000)

## Special advantages ES15 Win

- ✓ Easy operation with user specific profiles for complete measurement sequences
- ✓ Easy evaluation of measurement results in the laboratory with adaptable presentation layout
- ✓ Windows user interface



**On-line color measurement  
pays off:  
Improvements in  
quality and profit**

## **Functional description ES15 Win**

The standard program ES15 Win includes the complete user interface, control of color measurement, statistical measurement control, colorimetry, presentation of measurement results, printouts, storage (MS Access), management of data, diagnostic, data export (MS Excel) etc. Laboratory and mobile applications are covered. Additional software programs and the Object Oriented Programming enable relatively easy adaptations to the application.

### **User Interface**

User specific profiles contain the type of measurement instrument, measurement and display functions, database names, language, measurement sequence etc. and simplify the use of the program.

The special selection menu is password protected to avoid unwanted changes.

### **Monitor display**

The measurement results can be displayed in up to 10 different display forms, single or parallel. The type of display can be easily configured as needed by the customer (MS Excel).

### **Printout**

For the documentation of the results there are, same as for the display, up to 10 different printouts, also configurable to the needs of the customers (MS Excel).

### **Color metrics**

- CIELab (L\*a\*b\*, L\* C\* h\*), CIELuv, XYZ, CMC(1:1, 2:1), ISO 105
- DIN 99
- Illuminants: A, C, D65, TL84
- Observers: 2°, 10°
- Yellowness (DIN 6167, ASTM D 1925-70)
- Whiteness: CIE, Berger, Harrisson, Stephansen, Tappi
- Metamerism (DIN 6172)

## **PC hardware requirements**

Operating system	Win 98, NT, 2000, XP
Processor	Pentium min.1 GHz,
RAM	min. 128 MB (as needed by the operating system)
Color monitor	min. 17"
Graphics	min SVGA 800*600
Hard disk	min. 100 MB free (also for databases)
Mouse, keyboard, floppy disk drive	3,5"
Free ports	serial port for measurement head parallel port for printer
Printer	A4

## **Optional programs**

### **ES16 Win: Multigeometry**

Measurement and display of the colorimetric values as a function of the measurement geometry

The measurement with the multi geometry systems ER 51 and ER 52 requires a widely extended program (selection of geometry, measurement control, display of results, data handling etc...).

### **Data conversion ES -> ES Win**

Conversion of measurement data from the DOS – program ES 15 to the new database structure of ES 15 WIN.

**gretagmacbeth**  
an X-Rite company

GretagMacbeth GmbH  
Fraunhofer Straße 14  
D-82152 Martinsried / Munich, Germany  
t: +49/89/85707-0, f: +49/89/85707-111  
Shanghai Office :  
t: +86(21)6448-1155, f: +86(21)6448-2468  
e-mail: [On-Line@GretagMacbeth.de](mailto:On-Line@GretagMacbeth.de)  
<http://www.Xrite.com>

**gretagmacbeth**  
an X-Rite company

- ✓ **Color data products (portable, benchtop, on-line)**
- ✓ **Software for quality control, color matching and closed loop control**
- ✓ **Light booths for visual inspection**
- ✓ **Densitometers, Color management systems**

**QUALITY  
MANAGEMENT**  
Certificate

Voluntary participation in regular  
monitoring according to ISO 9001

